

MICROSCOPE CAMERA OPTIMA

A59.4910



- 5.0MP High Quality CMOS Sensor
- Real Time Preview, Image/Video Capture
- Professional Measuring & Analysis Software
- Support Windows & Mac System
- For Microscope C-Mount & Eyepiece Use



PRODUCT DESCRIPTION

Image Sensor	Color
Expose	Rolling Shutter
Maximum Resolution	2592x1944(5,038,848 Pixels)
Sensor Optical Format	1/2.5" (5.70mm(H) x 4.28mm(V), Diagonal 7.13mm)
Pixel Size	2.2 μ m x 2.2 μ m(BSI)
Dynamic Range	74.3 dB Linear, More Than 96 dB (Interleaved)
SNRmax	40dB
Spectral Characteristics	380-650nm
Exposure Capability	3.9ms-320ms, Automatic And Manual
White Balance	Automatic And Manual
Preview Modes	30FPS @2592X1944, 30FPS @1920X1080 30FPS @800X600, 640X480
Record Format	Snapshot Picture Format: JPG, BMP, PNG, TIFF, PDF Resolution: 2592x1944, 1920x1080, 800x600, 640x480 Record

	Resolution: 1920x1080, 800x600, 640x480
Software Environment	
Windows System Demand	Microsoft®Windows® XP/7/8/8.1/10 (32&64 Bit)
	CPU: Equal Or More Than The Second Generation Intel Core 2.8GHz
	Memory: 2G Or More
	USB Port: USB 2.0 High Speed Port Or Compatible Port
	Displayer: Suggest 17 Inches Or Larger
Operating Environment	
Operating Temperature	0°C-40°C
Storage Temperature	-20°C-60°C
Operating Humidity	30-80%RH
Storage Humidity	10-60%RH
Power Supply	Direct-Current 5V, Supply By USB Port

PRODUCT DISPLAY

A59.4910







A59.4910-M05





Models Optional





A59.4910 with standard C-Mount



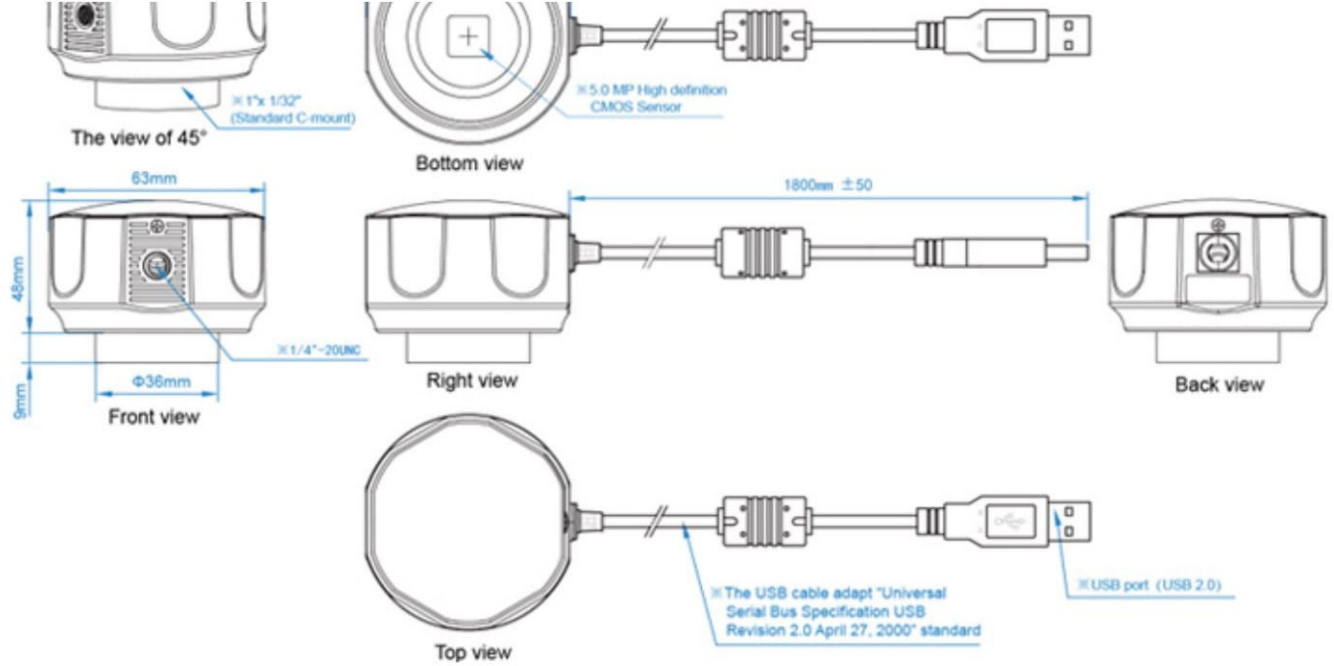
A59.4910-M05 with standard C-Mount and 0.5x eyepiece tube adapter set (for eyepiece tube dia. 23.2mm, 30.0mm, 30.5mm)



- 01 A closed structure with color filter built-in, preventing dust from CMOS sensor.
- 02 Designed with commonly used tripod mount 1/4-20A for widely use.
- 03 Reliable electronic double plates design to resolve over heat problem after long working time.
- 04 5V DC power supply from USB port no need additional power adapter.
- 05 3 Years Quality Warranty!

Drawing Display:

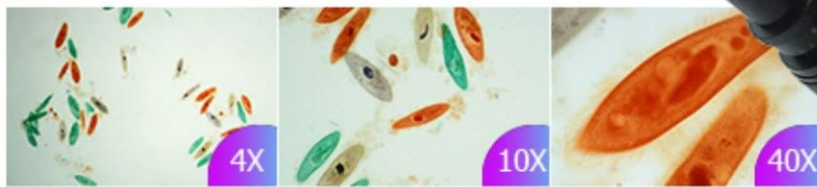




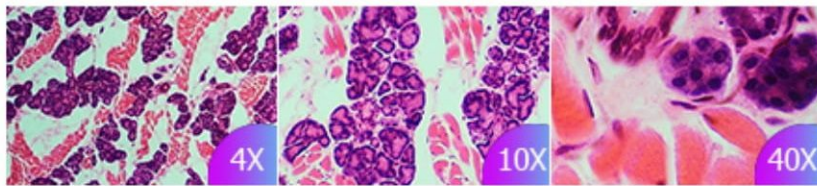
Pathological sections under different objectives



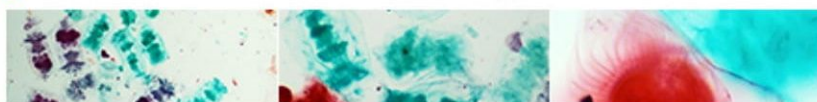
Paramecium sections under different objectives



Dog taste buds sections under different objectives



Rotifer sections under different objectives



Hardware Configuration	
Imaging Sensor	Colorful
Scan Patterns	Scan Line By Line
The Maximum Resolution	2592 x 1944(5,038,848 Pixels)
Sensor Optical Format	1/2.5" (5.70mm(H) x 4.28mm(V), Diagona 7.13mm)
Pixel Size	2.2μm x 2.2μm
Dynamic Range	70.1dB
ADC	12-bit, 8-Bit R.G.B to PC
SNRmax	38.1dB
Spectral Characteristics	380-650nm
Preview Modes	10FPS@2592x1944, 15FPS@1920x1080, 1600x1200 40FPS@1280x960, 1280x720, 1024x768, 800x600, 640x480
Binning Modes	1 x 1, 2 x 2
Exposure Capability	3.9ms - 320ms, Automatic And Manual
White Balance	Automatic And Manual
Software Interface	DirectShow
Capture Modes	Photos And Videos (MJPEG and AVI)
Software Environment	
Operation System	Microsoft®Windows®XP / 7 / 8 /8.1/10(32 & 64 bit)
Computer Configuration	CPU: Equal Or More Than The Second Generation Intel Core 2.8GHz
	Memory : 2G Or More
	USB Port : USB2.0 High Speed Port Or Compatible Port
	Displayer : Suggest 17 Inches Or Larger
Operating Environment	
Operating Temperature	-10°C~ 50°C
Storage Temperature	-20°C~ 60°C
Operating Humidity	30~80%RH
Storage Humidity	10~60%RH
Power Supply	Direct-current , Supply By USB Port